

ImageSync

Capturing, managing, deploying images as well as re-imaging computers is a constant challenge when supporting purpose built devices. Now Micro's ImageSync Appliance was designed to simplify these tasks as well as provide additional features to benefit our solution provider partners.

Features

- **Branch Office Support:** Ensure all of your support locations are using the same images with additional ImageSync appliances
- **USB Flash Drive Creation:** With the push of a button create bootable USB flash drives for field re-imagin
- **Centralizing Management:** Centralized repository for all images
- **Easy Image Transfer:** Eliminating the need for shipping of images or FTP transfers, greatly decreasing the time needed for image testing and validation between engineering teams
- **Image Consistency:** With Now Micro and your engineering team working from the same synced image repository you can ensure image consistency across manufacturing, in-house imaging, as well as support

Components

The ImageSync Appliance contains a few components. For most users, this section is for informational purposes only.

ImageSync Appliance

The appliance is delivered in one of several hardware platforms.

Sizing

- The number of supported simultaneous reimaging sessions is proportional to the number of 1GB network connections provided by the hardware.
- One gigabit network connection supports 5-10 clients at full speed and up to 30 simultaneous connections at a proportionately slower speed.
- Clients with slower storage will image slower, but allow more simultaneous connections at their maximum speed

Hardware Platforms

- DMP-4510 – A 1U appliance with optional network expansion capability
1-5 network connections depending on configuration
- DMP-4310 – A custom small form factor system
1-2 network connections depending on configuration

ImageSync GUI

The ImageSync GUI (Now Micro ImageSync) is an application that provides an easy to use interface for simple all described services

ImageSync Service

This service provides synchronization servers to Now Micro provided servers for content upload and download. Features:

- All communication is encrypted and uses SSL (port 443)
- Individual shares are secured with unique credentials

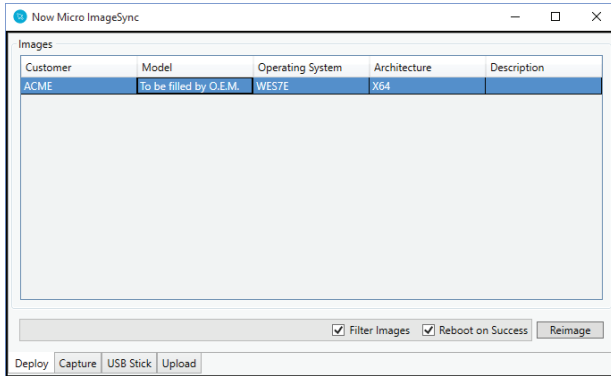
Setting up the ImageSync Appliance

The ImageSync Appliance will be delivered with an agreed upon configuration based on client needs. For a basic setup, only a network connection is required. When facing the rear of the appliance, the network ports are numbered 1-x from left to right.

Setup Options

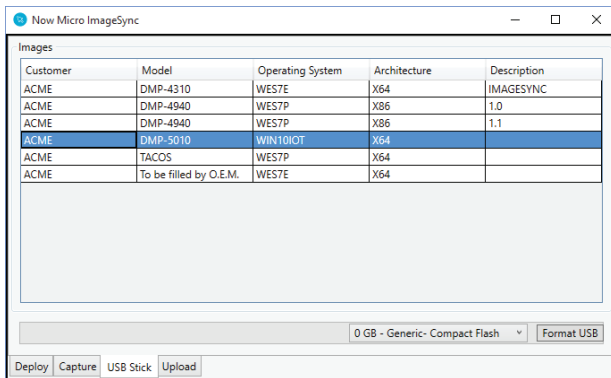
- Option 1**
 - ImageSync Appliance provides DHCP services to the local LAN
 - Port 1 is connected to the local LAN
- Option 2**
 - ImageSync Appliance provides DHCP services to a single client or clients connected to a small switch for imaging only
 - Port 1 is connected to the customer network
 - Port 2 is connected to a single client or SMB switch
- Option 3**
 - ImageSync Appliance does not provide DHCP services
 - Port 1 is connected to the LAN

How to Use ImageSync



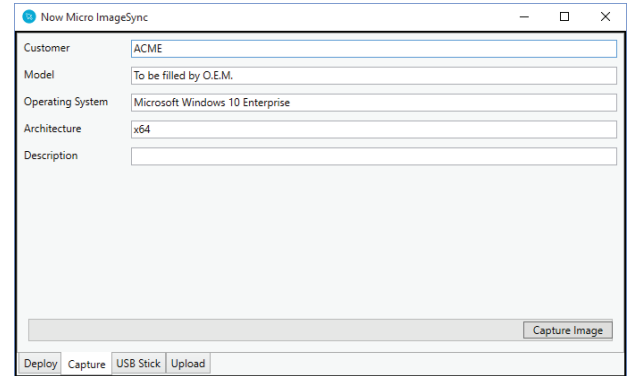
Deploying an Image

1. Click on the image for the appropriate OS licensed for the device. The list is automatically filtered to only show supported images.
2. Click “Reimage”
3. The progress bar will turn green and say “Complete” when the image is fully deployed
4. The computer will reboot automatically when complete



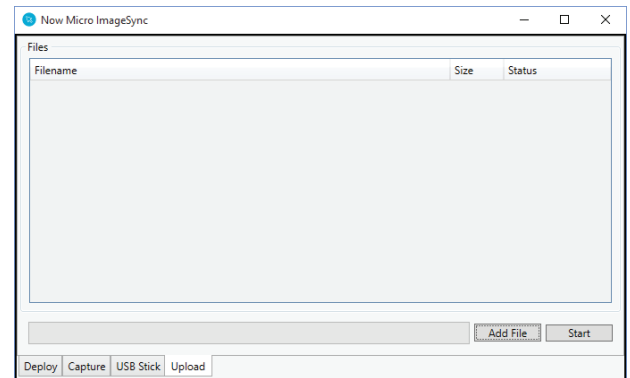
Create a USB Stick for Offline Imaging

1. Click on the image you would like to be provisioned to the USB stick
2. Select the device to be used for imaging
3. Click “Format USB”
4. When complete, boot the newly created USB stick and follow the directions for deploying an image



Capturing an Image

1. Click the Capture Tab
2. Enter Customer name and Description if applicable
3. Click “Capture Image”
4. The progress bar will turn green and say “Complete” when the image is fully captured
5. The image will automatically be uploaded to Now Micro in the background



Uploading a File

1. Click “Add File” and select files to be uploaded
2. Click “Start”